

# Egro End User Price List 2025

## index

---

Features	2
<b>Coffee, Milk &amp; more</b>	
Next Pure Coffee	4
Next Pure Coffee SV	6
Next Quick Milk	8
Next NMS+	10
Next X2 NMS+	12
One Pure Coffee	14
One Quick Milk	16
One Top Milk	18
Two Top Milk	20
<b>NEW</b> MoDe Pure Coffee	22
<b>NEW</b> MoDe Quick Milk	24
<b>NEW</b> MoDe Pro Milk	26
<b>NEW</b> MoDe X2 Pro Milk	28
QuBe Pure Coffee	30
QuBe Quick Milk	31
QuBe Pro Milk	32
<b>Fresh Brew Coffee</b>	
Touch Coffee	34
Touch Coffee with built-in Coffee Cooler	36
<b>NEW</b> Fridges	38
Pump modules (SMPU)	48
Add-ons	49
Payment systems	51
DP	52
Accessories	54
General conditions of sales	55

# Features

	Next Pure Coffee	Next Pure Coffee SV	Next Quick Milk	Next NMS+	Next X2 NMS+	One Pure Coffee Keypad	One Pure Coffee Touch	One Quick Milk Keypad	One Quick Milk Touch	One Top Milk Keypad	One Top Milk Touch	Two Top Milk Keypad	Two Top Milk Touch
Recommended daily output * (cups)	250	250	250	300	600	250	250	250	250	300	300	600	600
10" HD Touchscreen	●	●	●	●	●								
7" Touchscreen													
5.7" Touchscreen							●		●		●		●
Keypad						●		●		●		●	
1 Self Adjusting Grinder (SAG)	●	●	●	●	●	● <sup>(i)</sup>	● <sup>(i)</sup>	● <sup>(i)</sup>	● <sup>(i)</sup>	● <sup>(i)</sup>	● <sup>(i)</sup>	● <sup>(i)</sup>	● <sup>(i)</sup>
Second Self Adjusting Grinder (SAG)	●	●	●	●	●	● <sup>(i)</sup>	● <sup>(i)</sup>	● <sup>(i)</sup>	● <sup>(i)</sup>	● <sup>(i)</sup>	● <sup>(i)</sup>	● <sup>(i)</sup>	● <sup>(i)</sup>
1 Grinder						●	●	●	●	●	●	●	●
Second Grinder						●	●	●	●	●	●	●	●
4 bean hoppers													
18 g Brewing Chamber	●	●	●	●	●	●	●	●	●	●	●	●	●
22 g Brewing Chamber	●	●	●	●	●	●	●	●	●	●	●	●	●
9-16 g Brewing Chamber													
Hot water bypass (1 cup of Americano)	●	●	●	●	●	●	●	●	●	●	●	●	●
Hot water bypass (2 cups of long coffee)	●	●	●	●	●	●	●	●	●	●	●	●	●
Fresh water bypass (1 cup of Americano)													
Variable parallel bypass													
Left side coffee outlet													
Central hot water outlet	●		●	●	●	●	●	●	●	●	●	●	●
Right side hot water outlet	●		●	●	●	●	●	●	●	●	●	●	●
Steam wand						● <sup>(2)</sup>	● <sup>(2)</sup>	● <sup>(2)</sup>	● <sup>(2)</sup>	● <sup>(2)</sup>	● <sup>(2)</sup>	● <sup>(2)</sup>	● <sup>(2)</sup>
Cool touch steam wand	●		●	●	●	● <sup>(2)</sup>	● <sup>(2)</sup>	● <sup>(2)</sup>	● <sup>(2)</sup>	● <sup>(2)</sup>	● <sup>(2)</sup>	● <sup>(2)</sup>	● <sup>(2)</sup>
Automatic steam wand (iSteam)	●		●	●	●	●	●	●	●	●	●	●	●
Automatic steam wand - 3 valves (iSteam Plus)	●					●	●						
Automatic steam wand (iSteam Pro)													
1 built-in powder hopper													
2 built-in powder hoppers													
Automatic Spout	●	●		●	●	● <sup>(i)</sup>	● <sup>(i)</sup>			● <sup>(i)</sup>	● <sup>(i)</sup>	● <sup>(i)</sup>	● <sup>(i)</sup>
Under counter grounds chute	●	●	●	●	●	●	●	●	●	●	●	●	●
Lock package	●	●	●	●	●	●	●	●	●	●	●	●	●
Option Self (lock package, cup stopper pins)	●	●	●	●	●	●	●	●	●	●	●	●	●
Payment systems	●	●	●	●	●	●	●	●	●	●	●	●	●
Connect (telemetry system) on request	●	●	●	●	●	●	●	●	●	●	●	●	●
MDB Protocol													

(1) power board required – (2) C-lever system – (3) wi-fi version only – (4) available only with Central hot water outlet



	MoDe Pure Coffee	MoDe Quick Milk	MoDe Pro Milk	MoDe X2 Pro Milk	QuBe Pure Coffee 2G+2S	QuBe Quick Milk 1G	QuBe Quick Milk 2G	QuBe Quick Milk 2G+1S	QuBe Pro Milk 1G	QuBe Pro Milk 2G	QuBe Pro Milk 2G+1S	Touch Coffee	Touch Coffee with Coffee Cooler
Recommended daily output * (cups)	150	150	180	360	80	100	100	100	120	120	120	200	200
10" HD Touchscreen												●	●
7" Touchscreen	●	●	●	●	●	●	●	●	●	●	●		
5.7" Touchscreen													
Keypad													
1 Self Adjusting Grinder (SAG)													
Second Self Adjusting Grinder (SAG)													
1 Grinder	●	●	●	●	●	●	●	●	●	●	●	●	●
Second Grinder	●	●	●	●	●		●	●		●	●		
4 bean hoppers												●	●
18 g Brewing Chamber	●	●	●	●									
22 g Brewing Chamber	●	●	●	●								●	●
9-16 g Brewing Chamber					●	●	●	●	●	●	●		
Hot water bypass (1 cup of Americano)	●	●	●	●	●	●	●	●	●	●	●		
Hot water bypass (2 cups of long coffee)													
Fresh water bypass (1 cup of Americano)	● <sup>(4)</sup>	● <sup>(4)</sup>	● <sup>(4)</sup>	● <sup>(4)</sup>									
Variable parallel bypass												●	●
Left side coffee outlet												●	●
Central hot water outlet	●	●	●	●									
Right side hot water outlet	●	●	●	●	●	●	●	●	●	●	●	●	●
Steam wand	●		●	●									
Cool touch steam wand													
Automatic steam wand (iSteam)													
Automatic steam wand - 3 valves (iSteam Plus)													
Automatic steam wand (iSteam Pro)	●		●	●									
1 built-in powder hopper	●	●	●	●	●			●			●		
2 built-in powder hoppers	●	●	●	●	●								
Automatic Spout													
Under counter grounds chute	●	●	●	●								●	●
Lock package	●	●	●	●	●	●	●	●	●	●	●	●	●
Option Self (lock package, cup stopper pins)	●	●	●	●								●	●
Payment systems	●	●	●	●								●	●
Connect (telemetry system) on request	● <sup>(3)</sup>	● <sup>(3)</sup>	● <sup>(3)</sup>	● <sup>(3)</sup>	● <sup>(3)</sup>	● <sup>(3)</sup>	● <sup>(3)</sup>	● <sup>(3)</sup>	● <sup>(3)</sup>	● <sup>(3)</sup>	● <sup>(3)</sup>	● <sup>(3)</sup>	● <sup>(3)</sup>
MDB Protocol					●	●	●	●	●	●	●		

\* For more information about the delivery capacity and energy consumption of Egro coffee machines, please visit: <https://www.grosskuechen.cert.hki-online.de/en>



## Technical data

### W X D X H - MAIN UNIT

300 x 575 x 770 mm  
11.8 x 22.6 x 30.3 in

### WEIGHT

57 kg / 125.7 lb

### COFFEE BOILER

0.5 l / 16.9 oz

### STEAM BOILER

1.9 l / 64.2 oz

### COFFEE BEAN HOPPER CAPACITY

1 kg / 2.2 lb

### POWER SUPPLY

220-240 V3~, 50-60 Hz (6.0 kW)  
220-240 V3~, 50-60 Hz (5.5 kW)  
380-415 V2N~, 50-60 Hz (6.0 kW)  
380-415 V2N~, 50-60 Hz (5.5 kW)  
220-240 V~, 50-60 Hz (6.0 kW)  
220-240 V~, 50-60 Hz (5.5 kW)  
220-240 V~, 50-60 Hz (3.6 kW)  
220-240 V~, 50-60 Hz (3.1 kW)  
208/220-240 V2ph~, 60 Hz (5/6 kW)  
208/220-240 V2ph~, 60 Hz (2/3 kW)

### WATER SUPPLY

Water mains connection

### NOISE LEVEL DURING USE

< 70 dB

## Delivery Capacity

### RECOMMENDED DAILY OUTPUT

cups

250

## Color

● BLACK



Next Pure Coffee

## Basic configuration

- **Next Pure Coffee** € 13.892,00  
10" HD Touchscreen,  
Unlimited number of programmable drinks  
1 Self Adjusting Grinder (SAG)  
18 g brewing chamber  
Central hot water outlet

## Coffee

- 22 g Brewing Chamber (BC22) € 194,00
- Second Self Adjusting Grinder (SAG) € 1.417,00
- Hot water bypass (1 cup of Americano) € 339,00
- Hot water bypass (2 cups of long coffee) € 339,00

## Hot Water

- Right side hot water outlet € 123,00

## Steam

- Cool touch steam wand € 214,00
- Automatic steam wand (iSteam) € 896,00
- Automatic steam wand - 3 valves (iSteam Plus) € 1.016,00

## Extra features

- Automatic Spout € 461,00
- Under counter grounds chute € 408,00
- Lock package € 212,00
- Option Self (lock package, cup stopper pins) € 299,00
- Payment systems see page 51
- Connect (telemetry system) on request

## Add-ons

- GUM External box for waste coffee (under coffee machine) € 363,00 see page 49
- Powder Module € 1.798,00 see page 49
- Cup Warmer € 2.146,00 see page 50

## Best sellers

QUICK-SERVICE RESTAURANTS, CAFETERIAS € 16.667,00

Next Pure Coffee, Second Self Adjusting Grinder (SAG), Automatic steam wand (iSteam), Hot water bypass (2 cups of long coffee), Right side hot water outlet

- Standard
- Optional

# Next Pure Coffee SV

Coffee, Milk & more

Next Pure Coffee SV



## Technical data

### W X D X H - MAIN UNIT

300 x 575 x 770 mm  
11.8 x 22.6 x 30.3 in

### WEIGHT

53 kg / 116.8 lb

### COFFEE BOILER

0.5 l / 16.9 oz

### COFFEE BEAN HOPPER CAPACITY

1 kg / 2.2 lb

### POWER SUPPLY

220-240V~, 50-60 Hz (3.1 kW)  
208/220-240 V2ph~, 60 Hz, (2.1/2.9 kW)

### WATER SUPPLY

Water mains connection

### NOISE LEVEL DURING USE

< 70 dB



Next Pure Coffee SV

## Delivery Capacity

### RECOMMENDED DAILY OUTPUT

cups

250

## Color

● BLACK

## Basic configuration

- **Next Pure Coffee SV** € 11.869,00  
10" HD Touchscreen,  
Unlimited number of programmable drinks  
1 Self Adjusting Grinder (SAG)  
18 g brewing chamber

## Coffee

- 22 g Brewing Chamber (BC22) € 194,00
- Second Self Adjusting Grinder (SAG) € 1.417,00
- Hot water bypass (1 cup of Americano) € 339,00
- Hot water bypass (2 cups of long coffee) € 339,00

## Extra features

- Automatic Spout € 461,00
- Under counter grounds chute € 408,00
- Lock package € 212,00
- Option Self (lock package, cup stopper pins) € 299,00
- Payment systems see page 51
- Connect (telemetry system) on request

## Add-ons

- GUM External box for waste coffee (under coffee machine) € 363,00 see page 49
- Powder Module € 1.798,00 see page 49
- Cup Warmer € 2.146,00 see page 50

● Standard

● Optional

# Next Quick Milk

Coffee, Milk & more

Next Quick Milk



## Technical data

### W X D X H - MAIN UNIT

300 x 575 x 770 mm / 11.8 x 22.6 x 30.3 in

### W X D X H - FRIDGE

240 x 450 x 475 mm / 9.4 x 17.7 x 18.7 in

### WEIGHT

57 kg / 125.7 lb

### COFFEE BOILER

0.5 l / 16.9 oz

### STEAM BOILER

1.9 l / 64.2 oz

### COFFEE BEAN HOPPER CAPACITY

1 kg / 2.2 lb

### POWER SUPPLY

220-240 V3~, 50-60 Hz (6.0 kW)

220-240 V3~, 50-60 Hz (5.5 kW)

380-415 V2N~, 50-60 Hz (6.0 kW)

380-415 V2N~, 50-60 Hz (5.5 kW)

220-240 V~, 50-60 Hz (6.0 kW)

220-240 V~, 50-60 Hz (5.5 kW)

220-240 V~, 50-60 Hz (3.6 kW)

220-240 V~, 50-60 Hz (3.1 kW)

208/220-240 V2ph~, 60 Hz (5/6 kW)

208/220-240 V2ph~, 60 Hz (2/3 kW)

### WATER SUPPLY

Water mains connection

### NOISE LEVEL DURING USE

< 70 dB



Next Quick Milk  
+ MK4 fridge

## Delivery Capacity

### RECOMMENDED DAILY OUTPUT

cups

250

## Color

● BLACK

## Basic configuration

- **Next Quick Milk** € 15.242,00  
10" HD Touchscreen,  
Unlimited number of programmable drinks  
1 Self Adjusting Grinder (SAG)  
18 g brewing chamber  
Central hot water outlet

① Next Quick Milk requires the installation of MK4 or FUM fridges, available as optionals.

## Coffee

- 22 g Brewing Chamber (BC22) € 194,00
- Second Self Adjusting Grinder (SAG) € 1.417,00
- Hot water bypass (1 cup of Americano) € 339,00
- Hot water bypass (2 cups of long coffee) € 339,00

## Hot Water

- Right side hot water outlet € 123,00

## Steam

- Cool touch steam wand € 214,00
- Automatic steam wand (iSteam) € 896,00

## Fridges

- MK4 fridge € 1.019,00  
1 type of milk, capacity 4.5 l, Venturi system  
see page 39
- FUM fridge (under coffee machine) see page 40  
1 type of milk, capacity 4 l, Venturi system

## Extra features

- Under counter grounds chute € 408,00
- Lock package € 212,00
- Option Self (lock package, cup stopper pins) € 299,00
- Payment systems see page 51
- Connect (telemetry system) on request

## Add-ons

- GUM External box for waste coffee (under coffee machine) € 363,00  
see page 49
- Powder Module € 1.798,00  
see page 49
- Cup Warmer € 2.146,00  
see page 50

## Best sellers

HOTELS, OFFICES/OCS, QUICK-SERVICE RESTAURANT, CONVENIENCE STORES, GAS STATIONS, CAFETERIAS, SELF-SERVICE FACILITIES € 18.140,00

Next Quick Milk, Second Self Adjusting Grinder (SAG), Hot water bypass (2 cups of long coffee), Right side hot water outlet, MK4 fridge

● Standard  
● Optional



## Technical data

### W X D X H - MAIN UNIT

300 x 575 x 770 mm / 11.8 x 22.6 x 30.3 in

### W X D X H - FRIDGE

300 x 365 x 580 mm / 11.8 x 14.4 x 22.8 in

### WEIGHT

57 kg / 125.7 lb

### COFFEE BOILER

0.5 l / 16.9 oz

### STEAM BOILER

1.9 l / 64.2 oz

### COFFEE BEAN HOPPER CAPACITY

1 kg / 2.2 lb

### POWER SUPPLY

220-240 V3~, 50-60 Hz (6.0 kW)

220-240 V3~, 50-60 Hz (5.5 kW)

380-415 V2N~, 50-60 Hz (6.0 kW)

380-415 V2N~, 50-60 Hz (5.5 kW)

220-240 V~, 50-60 Hz (6.0 kW)

220-240 V~, 50-60 Hz (5.5 kW)

220-240 V~, 50-60 Hz (3.6 kW)

220-240 V~, 50-60 Hz (3.1 kW)

208/220-240 V2ph~, 60 Hz (5/6 kW)

208/220-240 V2ph~, 60 Hz (2/3 kW)

### WATER SUPPLY

Water mains connection

### NOISE LEVEL DURING USE

< 70 dB

## Delivery Capacity

### RECOMMENDED DAILY OUTPUT

cups

300

## Color

● BLACK



Next NMS+  
+ MK6 fridge

## Basic configuration

- **Next NMS+** € 15.817,00  
10" HD Touchscreen,  
Unlimited number of programmable drinks  
1 Self Adjusting Grinder (SAG)  
18 g brewing chamber  
NMS+ milk system  
Central hot water outlet

① Next NMS+ requires the installation of MK6 or FUM fridges, available as optionals. Under counter fridges require the installation of a SMPU external pump module.

## Coffee

- 22 g Brewing Chamber (BC22) € 194,00
- Second Self Adjusting Grinder (SAG) € 1.417,00
- Hot water bypass (1 cup of Americano) € 339,00
- Hot water bypass (2 cups of long coffee) € 339,00

## Hot Water

- Right side hot water outlet € 123,00

## Steam

- Cool touch steam wand € 214,00
- Automatic steam wand (iSteam) € 896,00

## Fridges

- MK6 fridge  
1 machine - 1 type of milk, capacity 6 l € 3.684,00  
see page 46
- MK6 fridge with Cold Milk Foam (CMF)  
1 machine - 1 type of milk, capacity 6 l € 4.622,00  
see page 46
- Full range of MK6 fridges with different combinations and optionals (2 types of milk, Cold Milk Foam, Lactose-free milk option, levels sensors, extension pipes) see page 46
- FUM fridge (under coffee machine)  
1 type of milk, capacity 4 l, pump module, milk level sensor see page 41
- FUM Fridge (under machine)  
with lactose-free milk option see page 41  
2 types of milk, milk containers (capacity 2.5 l + 1.25 l), pump module, milk level sensor
- Pump modules (SMPU) see page 48

## Extra features

- Automatic Spout € 461,00
- Under counter grounds chute € 408,00
- Lock package € 212,00
- Option Self (lock package, cup stopper pins) € 299,00
- Payment systems see page 51
- Connect (telemetry system) on request

## Add-ons

- GUM External box for waste coffee (under coffee machine) € 363,00  
see page 49
- Powder Module € 1.798,00  
see page 49
- Cup Warmer € 2.146,00  
see page 50

## Best sellers

CAFETERIAS, QUICK-SERVICE RESTAURANTS, CONVENIENCE STORES, GAS STATIONS € 21.380,00

Next NMS+, Second Self Adjusting Grinder (SAG), Hot water bypass (2 cups of long coffee), Right side hot water outlet, MK6 fridge (1 type of milk)

OFFICES/OCS, CONVENIENCE STORES, GAS STATIONS, SELF-SERVICE FACILITIES € 23.938,00

Next NMS+, Second Self Adjusting Grinder (SAG), Hot water bypass (2 cups of long coffee), Right side hot water outlet, Automatic Spout, MK6 fridge (1 type of milk), Option Self (lock package, cup stopper pins), Powder Module

- Standard
- Optional



# Next X2 NMS+

Coffee, Milk & more

Next X2 NMS+



## Technical data

W X D X H  
2 MACHINES + FRIDGE  
900 x 575 x 770 mm / 35.4 x 22.6 x 30.3 in

WEIGHT  
143 kg / 315.3 lb

COFFEE BOILER \*  
0.5 l / 16.9 oz

STEAM BOILER \*  
1.9 l / 64.2 oz

COFFEE BEAN HOPPER CAPACITY  
1 kg / 2.2 lb

POWER SUPPLY  
220-240 V3~, 50-60 Hz (6.0 kW)  
220-240 V3~, 50-60 Hz (5.5 kW)  
380-415 V2N~, 50-60 Hz (6.0 kW)  
380-415 V2N~, 50-60 Hz (5.5 kW)  
220-240 V~, 50-60 Hz (6.0 kW)  
220-240 V~, 50-60 Hz (5.5 kW)  
220-240 V~, 50-60 Hz (3.6 kW)  
220-240 V~, 50-60 Hz (3.1 kW)  
208/220-240 V2ph~, 60 Hz (5/6 kW)  
208/220-240 V2ph~, 60 Hz (2/3 kW)

WATER SUPPLY  
Water mains connection

NOISE LEVEL DURING USE  
< 70 dB

## Delivery Capacity

RECOMMENDED DAILY OUTPUT  
cups **600**

## Color

● BLACK



Next X2 NMS+  
+ MK6 fridge

## Basic configuration

- **Next X2 NMS+ \*** € 35.898,00  
10" HD Touchscreen,  
Unlimited number of programmable drinks  
Self Adjusting Grinder (SAG)  
18 g brewing chamber  
NMS+ milk system  
Central hot water outlet
- **MK6 fridge**  
1 type of milk, capacity 6 l

\* per machine

## Coffee

- 22 g Brewing Chamber (BC22) \* € 194,00
- Second Self Adjusting Grinder (SAG) \* € 1.417,00
- Hot water bypass \* (1 cup of Americano) € 339,00
- Hot water bypass \* (2 cups of long coffee) € 339,00

## Hot Water

- Right side hot water outlet \* € 123,00

## Steam

- Cool touch steam wand \* € 214,00
- Automatic steam wand (iSteam) \* € 896,00

## Fridges

- Full range of MK6 fridges with different combinations and optionals (2 types of milk, level sensors, extension pipes) see page 47
- Pump modules (SMPU) see page 48

## Extra features

- Automatic Spout \* € 461,00
- Under counter grounds chute \* € 408,00
- Lock package \* € 212,00
- Option Self (lock package, cup stopper pins) \* € 299,00
- Payment systems see page 51
- Connect (telemetry system) on request

\* per machine

## Add-ons

- GUM External box for waste coffee \* (under coffee machine) € 363,00 see page 49
- Powder Module \* € 1.798,00 see page 49
- Cup Warmer \* € 2.146,00 see page 50

## Best sellers

HOTELS, OFFICES/OCS, QUICK-SERVICE RESTAURANTS, CONVENIENCE STORES, GAS STATIONS, CAFETERIAS € 40.084,00

Next X2 NMS+, 2x Second Self Adjusting Grinder (SAG), 2x Hot water bypass (2 cups of long coffee), 2x Right side hot water outlet, 2x Cool touch steam wand.

- Standard
- Optional

# One Pure Coffee

Coffee, Milk & more

One Pure Coffee



## Technical data

### W X D X H - MAIN UNIT

300 x 570 x 770 mm  
11.8 x 22.4 x 30.3 in

### WEIGHT

57 kg / 125.7 lb

### COFFEE BOILER

0.5 l / 16.9 oz

### STEAM BOILER

1.9 l / 64.2 oz

### COFFEE BEAN HOPPER CAPACITY

1.3 kg / 2.9 lb

### POWER SUPPLY

220-240 V3~, 50-60 Hz (6.0 kW)  
380-415 V2N~, 50-60 Hz (6.0 kW)  
220-240 V~, 50-60 Hz (6.0 kW)  
220-240 V~, 50-60 Hz (3.6 kW)  
208/240 V2ph~, 60 Hz (5/6 kW)

### WATER SUPPLY

Water mains connection

### NOISE LEVEL DURING USE

< 70 dB



**One Pure Coffee**  
Keypad



**One Pure Coffee**  
Touch

## Delivery Capacity

### RECOMMENDED DAILY OUTPUT

cups

250

## Colors

● BLACK

## Basic configuration

- **One Pure Coffee Keypad** € 11.765,00  
10-button Keypad, 16 programmable drinks  
1 grinder  
18 g brewing chamber  
Central hot water outlet
- **One Pure Coffee Touch** € 12.614,00  
5.7" Touchscreen, 48 programmable drinks  
1 grinder  
18 g brewing chamber  
Central hot water outlet

## Operating System

- **Power Board** € 350,00  
To be included in the machine configuration only when purchasing at least one of the following optionals: Self Adjusting Grinder (SAG), Automatic Spout.

## Coffee

- 22 g Brewing Chamber (BC22) € 194,00
- Second grinder € 1.009,00
- Self Adjusting Grinder (SAG) for 1 grinder (power board required) € 292,00
- Self Adjusting Grinder (SAG) for 2 grinders (power board required) € 432,00
- Hot water bypass (1 cup of Americano) € 339,00
- Hot water bypass (2 cups of long coffee) € 339,00

## Hot Water

- Right side hot water outlet € 76,00

## Steam

- Steam wand (C-lever) € 223,00
- Cool touch steam wand (C-lever) € 281,00
- Automatic steam wand (iSteam) € 753,00
- Automatic steam wand - 3 valves (iSteam Plus) € 1.016,00

## Extra features

- Automatic Spout (power board required) € 423,00
- Under counter grounds chute € 408,00
- Lock package € 212,00
- Option Self (lock package, cup stopper pins) € 299,00
- Payment systems see page 51
- Connect (telemetry system) on request

## Add-ons

- GUM External box for waste coffee (under coffee machine) € 363,00 see page 49
- Powder Module € 1.798,00 see page 49
- Cup Warmer € 2.146,00 see page 50

## Best sellers

HOTELS, QUICK-SERVICE RESTAURANTS, CONVENIENCE STORES, GAS STATIONS, CAFETERIAS € 15.054,00

One Pure Coffee Touch, Second Grinder, Automatic steam wand - 3 valves (iSteam Plus), Hot water bypass (2 cups of long coffee), Right side hot water outlet

- Standard
- Optional



# One Quick Milk

Coffee, Milk & more

One Quick Milk



## Technical data

### W X D X H - MAIN UNIT

300 x 570 x 770 mm  
11.8 x 22.4 x 30.3 in

### W X D X H - FRIDGE

240 x 450 x 475 mm  
9.4 x 17.7 x 18.7 in

### WEIGHT

57 kg / 125.7 lb

### COFFEE BOILER

0.5 l / 16.9 oz

### STEAM BOILER

1.9 l / 64.2 oz

### COFFEE BEAN HOPPER CAPACITY

1.3 kg / 2.9 lb

### POWER SUPPLY

220-240 V3~, 50-60 Hz (6.0 kW)  
380-415 V2N~, 50-60 Hz (6.0 kW)  
220-240 V~, 50-60 Hz (6.0 kW)  
220-240 V~, 50-60 Hz (3.6 kW)  
208/240 V2ph~, 60 Hz (5/6 kW)

### WATER SUPPLY

Water mains connection

### NOISE LEVEL DURING USE

< 70 dB



**One Quick Milk**  
Keypad  
+ MK4 fridge

**One Quick Milk**  
Touch  
+ MK4 fridge

## Delivery Capacity

### RECOMMENDED DAILY OUTPUT

cups

250

## Colors

● BLACK

## Basic configuration

- **One Quick Milk Keypad** € 12.259,00  
10-button Keypad, 16 programmable drinks  
1 grinder  
18 g brewing chamber  
Central hot water outlet

- **One Quick Milk Touch** € 13.108,00  
5.7" Touchscreen, 48 programmable drinks  
1 grinder  
18 g brewing chamber  
Central hot water outlet

① One Quick Milk requires the installation of MK4 or FUM fridges, available as optionals.

## Operating System

- **Power Board** € 350,00  
To be included in the machine configuration only when purchasing the Self Adjusting Grinder (SAG)

## Coffee

- 22 g Brewing Chamber (BC22) € 194,00
- Second grinder € 1.009,00
- Self Adjusting Grinder (SAG) for 1 grinder (power board required) € 292,00
- Self Adjusting Grinder (SAG) for 2 grinders (power board required) € 432,00
- Hot water bypass (1 cup of Americano) € 339,00
- Hot water bypass (2 cups of long coffee) € 339,00

## Hot Water

- Right side hot water outlet € 76,00

## Steam

- Steam wand (C-lever) € 548,00
- Cool touch steam wand (C-lever) € 606,00
- Automatic steam wand (iSteam) € 1.408,00

## Fridges

- MK4 fridge € 1.019,00  
1 type of milk, capacity 4.5 l, Venturi system see page 39
- FUM fridge (under coffee machine) see page 40  
1 type of milk, capacity 4 l, Venturi system

## Extra features

- Under counter grounds chute € 408,00
- Lock package € 212,00
- Option Self (lock package, cup stopper pins) € 299,00
- Payment systems see page 51
- Connect (telemetry system) on request

## Add-ons

- GUM External box for waste coffee (under coffee machine) € 363,00 see page 49
- Powder Module € 1.798,00 see page 49
- Cup Warmer € 2.146,00 see page 50

## Best sellers

HOTELS, OFFICES/OCS, QUICK-SERVICE RESTAURANT, CONVENIENCE STORES, GAS STATIONS, CAFETERIAS, SELF-SERVICE FACILITIES € 15.551,00

One Quick Milk Touch, Second Grinder, Hot water bypass (2 cups of long coffee), Right side hot water outlet, MK4 fridge

- Standard
- Optional



## Technical data

### W X D X H - MAIN UNIT

300 x 570 x 770 mm  
11.8 x 22.4 x 30.3 in

### W X D X H - FRIDGE

300 x 455 x 580 mm  
11.8 x 17.9 x 22.8 in

### WEIGHT

57 kg / 125.7 lb

### COFFEE BOILER

0.5 l / 16.9 oz

### STEAM BOILER

1.9 l / 64.2 oz

### COFFEE BEAN HOPPER CAPACITY

1.3 kg / 2.9 lb

### POWER SUPPLY

220-240 V3~, 50-60 Hz (6.0 kW)  
380-415 V2N~, 50-60 Hz (6.0 kW)  
220-240 V~, 50-60 Hz (6.0 kW)  
220-240 V~, 50-60 Hz (3.6 kW)  
208/240 V2ph~, 60 Hz (5/6 kW)

### WATER SUPPLY

Water mains connection

### NOISE LEVEL DURING USE

< 70 dB

## Delivery Capacity

### RECOMMENDED DAILY OUTPUT

cups

300

## Colors

● BLACK



**One Top Milk**  
Keypad  
+ MK6 Fridge

**One Top Milk**  
Touch  
+ MK6 Fridge

## Basic configuration

- **One Top Milk Keypad** € 13.602,00  
10-button Keypad, 16 programmable drinks  
1 grinder  
18 g brewing chamber  
Central hot water outlet
- **One Top Milk Touch** € 14.451,00  
5.7" Touchscreen, 48 programmable drinks  
1 grinder  
18 g brewing chamber  
Central hot water outlet

① One Top Milk requires the installation of MK6 or FUM fridges, available as optionals. Under counter fridges require the installation of a SMPU external pump module.

## Operating System

- **Power Board** € 350,00  
To be included in the machine configuration only when purchasing at least one of the following optionals: Self Adjusting Grinder (SAG), MK6 fridges with Cold Milk Foam (CMF), Automatic Spout.

## Coffee

- 22 g Brewing Chamber (BC22) € 194,00
- Second grinder € 1.009,00
- Self Adjusting Grinder (SAG) for 1 grinder (power board required) € 292,00
- Self Adjusting Grinder (SAG) for 2 grinders (power board required) € 432,00
- Hot water bypass (1 cup of Americano) € 339,00
- Hot water bypass (2 cups of long coffee) € 339,00

## Hot Water

- Right side hot water outlet € 76,00

## Steam

- Steam wand (C-lever) € 223,00
- Cool touch steam wand (C-lever) € 281,00
- Automatic steam wand (iSteam) € 753,00

## Fridges

- MK6 fridge  
1 machine - 1 type of milk, capacity 6 l € 3.684,00  
see page 43
- MK6 fridge with Cold Milk Foam (CMF)  
1 machine - 1 type of milk, capacity 6 l (power board required) € 4.622,00  
see page 43
- Full range of MK6 fridges with different combinations and optionals (2 types of milk, Cold Milk Foam, levels sensors, extension pipes) see page 43
- FUM fridge (under coffee machine)  
1 type of milk, capacity 4 l, pump module, milk level sensor see page 40
- Pump modules (SMPU) see page 48

## Extra features

- Automatic Spout (power board required) € 423,00
- Under counter grounds chute € 408,00
- Lock package € 212,00
- Option Self (lock package, cup stopper pins) € 299,00
- Payment systems see page 51
- Connect (telemetry system) on request

## Add-ons

- GUM External box for waste coffee (under coffee machine) € 363,00  
see page 49
- Powder Module € 1.798,00  
see page 49
- Cup Warmer € 2.146,00  
see page 50

## Best sellers

CAFETERIAS, QUICK-SERVICE RESTAURANTS, CONVENIENCE STORES, GAS STATIONS € 19.782,00

One Top Milk Touch, Second Grinder, Hot water bypass (2 cups of long coffee), Right side hot water outlet, Steam wand (C-lever), MK6 fridge (1 type of milk)

OFFICES/OCS, CONVENIENCE STORES, GAS STATIONS, SELF-SERVICE FACILITIES € 21.988,00

One Top Milk Touch, Second Grinder, Hot water bypass (1 cup of Americano), MK6 fridge (1 type of milk), Under counter grounds chute, Option self (lock package, cup stopper pins), Powder Module

- Standard
- Optional

# Two Top Milk

Coffee, Milk & more

Two Top Milk



## Technical data

### W X D X H

2 MACHINES + FRIDGE  
900 x 570 x 770 mm  
35.4 x 22.4 x 30.3 in

### WEIGHT

143 kg / 315.3 lb

### COFFEE BOILER \*

0.5 l / 16.9 oz

### STEAM BOILER \*

1.9 l / 64.2 oz

### COFFEE BEAN HOPPER CAPACITY

1.3 kg / 2.9 lb

### POWER SUPPLY

220-240 V3~, 50-60 Hz (12.0 kW)  
380-415 V2N~, 50-60 Hz (12.0 kW)  
220-240 V~, 50-60 Hz (12.0 kW)  
220-240 V~, 50-60 Hz (7.2 kW)  
208/240 V2ph~, 60 Hz (10/12 kW)

### WATER SUPPLY

Water mains connection

### NOISE LEVEL DURING USE

< 70 dB

## Delivery Capacity

### RECOMMENDED DAILY OUTPUT

cups

600

## Color

● BLACK



Two Top Milk Keypad



Two Top Milk Touch

## Basic configuration

- **Two Top Milk Keypad \*** € 31.467,00  
10-button Keypad,  
2x 16 programmable drinks  
Grinder  
18 g brewing chamber  
Central hot water outlet

**MK6 fridge**  
1 type of milk, capacity 6 l

- **Two Top Milk Touch \*** € 33.165,00  
5.7" Touchscreen,  
2x 48 programmable drinks  
Grinder  
18 g brewing chamber  
Central hot water outlet

**MK6 fridge**  
1 type of milk, capacity 6 l

## Operating System

- **Power Board** € 350,00  
To be included in the machine configuration only when purchasing at least one of the following optionals: Self Adjusting Grinder (SAG), Automatic Spout.

## Coffee

- 22 g Brewing Chamber (BC22) \* € 194,00
- Second grinder \* € 1.009,00
- Self Adjusting Grinder (SAG) for 1 grinder \* (power board required) € 292,00
- Self Adjusting Grinder (SAG) for 2 grinders \* (power board required) € 432,00
- Hot water bypass \* (1 cup of Americano) € 339,00
- Hot water bypass \* (2 cups of long coffee) € 339,00

## Hot Water

- Right side hot water outlet \* € 76,00

## Steam

- Steam wand (C-lever) \* € 223,00
- Cool touch steam wand (C-lever) \* € 281,00
- Automatic steam wand (iSteam) \* € 753,00

## Fridges

- Full range of MK6 fridges with different combinations and optionals (2 types of milk, level sensors, extension pipes) see page 44
- Pump modules (SMPU) see page 48

## Extra features

- Automatic Spout \* (power board required) € 423,00
- Under counter grounds chute \* € 408,00
- Lock package \* € 212,00
- Option Self (lock package, cup stopper pins) \* € 299,00
- Payment systems see page 51
- Connect (telemetry system) on request

## Add-ons

- GUM External box for waste coffee \* (under coffee machine) € 363,00 see page 49
- Powder Module \* € 1.798,00 see page 49
- Cup Warmer \* € 2.146,00 see page 50

## Best sellers

HOTELS, OFFICES/OCs, QUICK-SERVICE € 36.459,00  
RESTAURANTS, CONVENIENCE STORES,  
GAS STATIONS, CAFETERIAS

Two Top Milk Touch, 2x Second Grinder, 2x Hot water bypass (2 cups of long coffee), 2x Right side hot water outlet, 2x Steam wand (C-lever)

\* per machine

\* per machine

- Standard
- Optional

# MoDe Pure Coffee

Coffee, Milk & more

MoDe Pure Coffee



## Technical data

### W X D X H - MAIN UNIT

300 x 580 x 790 mm  
11.8 x 22.8 x 31.1 in

### WEIGHT

43 kg / 94.8 lb

### COFFEE BOILER

0.5 l

### STEAM BOILER

0.8 l

### COFFEE BEAN HOPPER CAPACITY

1x 1.25 kg (1G)  
2x 0.75 kg (2G)

### POWER SUPPLY

100-120 V, 50-60 Hz (1.5 kW)  
220-240 V, 50-60 Hz (2.3 kW)  
220-240 V, 50-60 Hz (3.5 kW)

### WATER SUPPLY

Water mains connection

### NOISE LEVEL DURING USE

< 70 dB



MoDe Pure Coffee

## Delivery Capacity

### RECOMMENDED DAILY OUTPUT

cups

150

## Color

● BLACK

## Basic configuration

- **MoDe Pure Coffee** € 8.094,00  
7" Touchscreen  
Unlimited number of programmable drinks  
1 grinder (1G)  
18 g brewing chamber  
Central hot water outlet  
Hot water bypass (1 cup of Americano)  
MDB Protocol

## Coffee

- 22 g Brewing Chamber (BC22) € 194,00
- Second grinder (2G) € 811,00
- Fresh water bypass \* (1 cup of Americano) € 99,00

## Hot Water

- Right side hot water outlet € 76,00

## Steam

- Steam wand installation of steam boiler included € 1.003,00
- Automatic steam wand (iSteam Pro) installation of steam boiler included € 1.719,00

## Powder

- 1 built-in powder hopper capacity 2 l € 655,00
- 2 built-in powder hoppers capacity 2 l € 1.038,00

## Extra features

- Under counter grounds chute € 408,00
- Lock package € 212,00
- Option Self (Lock package, Cup stopper) € 299,00
- Payment systems see page 51
- Connect (telemetry system) wi-fi version only on request

## Add-ons

- Cup Warmer € 2.146,00 see page 50

● Standard

● Optional

\* available only with Central hot water outlet



## Technical data

### W X D X H - MAIN UNIT

300 x 580 x 790 mm  
11.8 x 22.8 x 31.1 in

### W X D X H - FRIDGE

240 x 450 x 475 mm  
9.4 x 17.7 x 18.7 in

### WEIGHT

43 kg / 94.8 lb

### COFFEE BOILER

0.5 l

### STEAM BOILER

0.8 l

### COFFEE BEAN HOPPER CAPACITY

1x 1.25 kg (1G)  
2x 0.75 kg (2G)

### POWER SUPPLY

100-120 V, 50-60 Hz (1.5 kW)  
220-240 V, 50-60 Hz (2.3 kW)  
220-240 V, 50-60 Hz (3.5 kW)

### WATER SUPPLY

Water mains connection

### NOISE LEVEL DURING USE

< 70 dB



MoDe Quick Milk  
+ MK4 fridge

## Delivery Capacity

### RECOMMENDED DAILY OUTPUT

cups **150**

## Color

● BLACK

## Basic configuration

- **MoDe Quick Milk** € 9.599,00  
7" Touchscreen  
Unlimited number of programmable drinks  
1 grinder (1G)  
18 g brewing chamber  
Central hot water outlet  
Hot water bypass (1 cup of Americano)  
Quick Milk system  
MDB Protocol

③ MoDe Quick Milk requires the installation of MK4 or FUM fridges, available as optionals.

## Coffee

- 22 g Brewing Chamber (BC22) € 194,00
- Second grinder (2G) € 811,00
- Fresh water bypass \* (1 cup of Americano) € 99,00

## Hot Water

- Right side hot water outlet € 76,00

## Powder

- 1 built-in powder hopper capacity 2 l € 655,00
- 2 built-in powder hoppers capacity 2 l € 1.038,00

## Fridges

- MK4 fridge € 1.019,00  
1 type of milk, capacity 4.5 l, Venturi system see page 39
- FUM fridge (under coffee machine) see page 40  
1 type of milk, capacity 4 l, Venturi system

## Extra features

- Under counter grounds chute € 408,00
- Lock package € 212,00
- Option Self (Lock package, Cup stopper) € 299,00
- Payment systems see page 51
- Connect (telemetry system) on request  
wi-fi version only

## Add-ons

- Cup Warmer € 2.146,00  
see page 50

● Standard  
● Optional

\* available only with Central hot water outlet





## Technical data

### W X D X H - MAIN UNIT

300 x 580 x 790 mm  
11.8 x 22.8 x 31.1 in

### W X D X H - MK6 FRIDGE

300 x 365 x 580 mm  
11.8 x 14.4 x 22.8 in

### W X D X H - MK4 FRIDGE

240 x 450 x 475 mm  
9.4 x 17.7 x 18.7 in

### WEIGHT

43 kg / 94.8 lb

### COFFEE BOILER

0.5 l

### STEAM BOILER

0.8 l

### COFFEE BEAN HOPPER CAPACITY

1x 1.25 kg (1G)  
2x 0.75 kg (2G)

### POWER SUPPLY

100-120 V, 50-60 Hz (1.5 kW)  
220-240 V, 50-60 Hz (2.3 kW)  
220-240 V, 50-60 Hz (3.5 kW)

### WATER SUPPLY

Water mains connection

### NOISE LEVEL DURING USE

< 70 dB



MoDe Pro Milk  
+ MK6 fridge

## Delivery Capacity

### RECOMMENDED DAILY OUTPUT

cups

180

## Color

● BLACK

## Basic configuration

- **MoDe Pro Milk** € 9.938,00  
7" Touchscreen  
Unlimited number of programmable drinks  
1 grinder (1G)  
18 g brewing chamber  
Central hot water outlet  
Hot water bypass (1 cup of Americano)  
Pro Milk system  
MDB Protocol

③ MoDe Pro Milk requires the installation of MK4, MK6 or FUM fridges, available as optional.

MK6 fridge can be installed on either the right or left side of the machine.

## Coffee

- 22 g Brewing Chamber (BC22) € 194,00
- Second grinder (2G) € 811,00
- Fresh water bypass \* (1 cup of Americano) € 99,00

## Hot Water

- Right side hot water outlet € 76,00

## Steam

- Steam wand € 270,00
- Automatic steam wand (iSteam Pro) € 995,00

## Powder

- 1 built-in powder hopper capacity 2 l € 655,00
- 2 built-in powder hoppers capacity 2 l € 1.038,00

## Fridges

- MK4 fridge € 1.469,00  
1 type of milk, capacity 4.5 l, pump module see page 39
- MK6 fridge € 3.684,00  
1 machine - 1 type of milk, capacity 6 l see page 45
- FUM fridge (under coffee machine) see page 42  
1 type of milk, capacity 4 l, pump module, milk level sensor

## Extra features

- Under counter grounds chute € 408,00
- Lock package € 212,00
- Option Self (Lock package, Cup stopper) € 299,00
- Payment systems see page 51
- Connect (telemetry system) on request  
wi-fi version only

## Add-ons

- Cup Warmer € 2.146,00  
see page 50

● Standard

● Optional

\* available only with Central hot water outlet





## Technical data

W X D X H  
2 MACHINES + MK6 FRIDGE  
900 x 580 x 790 mm  
35.4 x 22.8 x 31.1 in

WEIGHT  
115 kg / 253.5 lb

COFFEE BOILER \*  
0.5 l

STEAM BOILER \*  
0.8 l

COFFEE BEAN HOPPER CAPACITY \*  
1x 1.25 kg (1G)  
2x 0.75 kg (2G)

POWER SUPPLY  
100-120 V, 50-60 Hz (3.0 kW)  
220-240 V, 50-60 Hz (4.6 kW)  
220-240 V, 50-60 Hz (7.0 kW)

WATER SUPPLY  
Water mains connection

NOISE LEVEL DURING USE  
< 70 dB



MoDe X2 Pro Milk  
+ MK6 fridge

## Delivery Capacity

RECOMMENDED DAILY OUTPUT  
cups **360**

## Basic configuration

- **MoDe X2 Pro Milk \*** € 24.139,00  
7" Touchscreen  
Unlimited number of programmable drinks  
1 grinder (1G)  
18 g brewing chamber  
Central hot water outlet  
Hot water bypass (1 cup of Americano)  
Pro Milk system  
MDB Protocol
- **MK6 fridge**  
(1 type of milk, capacity 6 l)

## Coffee

- 22 g Brewing Chamber (BC22) \* € 194,00
- Second grinder (2G) \* € 811,00
- Fresh water bypass \*\* (1 cup of Americano) € 99,00

## Hot Water

- Right side hot water outlet \* € 76,00

## Steam

- Steam wand \* € 270,00
- Automatic steam wand (iSteam Pro) \* € 995,00

## Powder

- 1 built-in powder hopper \* capacity 2 l € 655,00
- 2 built-in powder hoppers \* capacity 2 l € 1.038,00

## Fridges

- Full range of MK6 fridges with different combinations and optionals (2 types of milk, level sensors, extension pipes) see page 45

## Extra features

- Under counter grounds chute € 408,00
- Lock package € 212,00
- Option Self (Lock package, Cup stopper) € 299,00
- Payment systems see page 51
- Connect (telemetry system) wi-fi version only on request

## Add-ons

- Cup Warmer € 2.146,00 see page 50

## Color

- BLACK

\* per machine

\* per machine

\*\* available only with Central hot water outlet

● Standard

● Optional

# QuBe Pure Coffee



## Technical data

W X D X H - MAIN UNIT  
368 x 554 x 585 mm / 14.5 x 21.8 x 23 in

WEIGHT  
25 kg / 55.11 lb

COFFEE BOILER  
0.6 l

COFFEE BEAN HOPPER CAPACITY  
0.6 kg

POWDER HOPPERS CAPACITY  
small 0.7 l  
large 1.5 l

POWER SUPPLY  
100-125 V, 50-60 Hz (1.4 kW)  
220-240 V, 50-60 Hz (1.7 kW)

WATER SUPPLY  
Water mains connection and  
built-in 4-liter water tank  
(adjustable during installation)

NOISE LEVEL DURING USE  
< 70 dB



## QuBe Pure Coffee

- **QuBe Pure Coffee**  
**2 grinders + 2 powders (2G+2S)** € 5.837,00  
7" Touchscreen  
27 programmable drinks  
9-16 g brewing chamber, Hot water bypass  
(1 cup of Americano), Right side hot water  
outlet, 2x 0.7 l powder hoppers, Lock package,  
MDB Protocol

The spare parts portal has accessories for installing the limescale protection system, which is recommended for all QuBe units connected to the integrated water tank:

'OR 2043 Viton' seal	ID nr. 6387.00059
'Caripure' water filter	ID nr. 6395.05205
Filter adapter	ID nr. 6337.05324

## Delivery Capacity

RECOMMENDED DAILY OUTPUT  
cups **80**

## Color

- BLACK The touchscreen frame is available in two colours - black or grey - with no change in price.

## Extra features

- Connect (telemetry system) on request  
wi-fi version only

\* adjustable during installation

# QuBe Quick Milk



## Technical data

W X D X H - MAIN UNIT  
368 x 554 x 585 mm / 14.5 x 21.8 x 23 in

W X D X H - FRIDGE  
240 x 450 x 475 mm / 9.4 x 17.7 x 18.7 in

WEIGHT  
27 kg / 59.52 lb

COFFEE BOILER  
0.6 l

COFFEE BEAN HOPPER CAPACITY  
0.6 kg

POWDER HOPPERS CAPACITY  
small 0.7 l  
large 1.5 l

POWER SUPPLY  
100-125 V, 50-60 Hz (1.4 kW)  
220-240 V, 50-60 Hz (1.7 kW)

WATER SUPPLY  
Water mains connection and  
built-in 4-liter water tank  
(adjustable during installation)

NOISE LEVEL DURING USE  
< 70 dB



## QuBe Quick Milk

- **QuBe Quick Milk**  
**1 grinder (1G)** € 6.079,00  
7" Touchscreen  
27 programmable drinks  
9-16 g brewing chamber, Hot water bypass  
(1 cup of Americano), Right side hot water  
outlet, Quick Milk system, Lock package,  
MDB Protocol

- **QuBe Quick Milk**  
**2 grinders (2G)** € 6.400,00  
7" Touchscreen  
27 programmable drinks  
9-16 g brewing chamber, Hot water bypass  
(1 cup of Americano), Right side hot water  
outlet, Quick Milk system, Lock package  
MDB Protocol

- **QuBe Quick Milk**  
**1 grinder + 2 powders (1G+2S)** € 6.852,00  
7" Touchscreen  
27 programmable drinks  
9-16 g brewing chamber, Hot water bypass  
(1 cup of Americano), Right side hot water  
outlet, Quick Milk system, 2x 0.7 l powder  
hoppers, Lock package, MDB Protocol

- **QuBe Quick Milk**  
**2 grinders + 1 powder (2G+1S)** € 6.786,00  
7" Touchscreen  
27 programmable drinks  
9-16 g brewing chamber, Hot water bypass  
(1 cup of Americano), Right side hot water  
outlet, Quick Milk system, 1x 1.5 l powder  
hopper, Lock package, MDB Protocol

The spare parts portal has accessories for installing the limescale protection system, which is recommended for all QuBe units connected to the integrated water tank:

'OR 2043 Viton' seal	ID nr. 6387.00059
'Caripure' water filter	ID nr. 6395.05205
Filter adapter	ID nr. 6337.05324

## Delivery Capacity

RECOMMENDED DAILY OUTPUT  
cups **100**

## Color

- BLACK The touchscreen frame is available in two colours - black or grey - with no change in price.

## Fridges

- MK4 fridge € 1.019,00  
1 type of milk, capacity 4.5 l see page 39

## Extra features

- Connect (telemetry system) on request  
wi-fi version only

# QuBe Pro Milk



## Technical data

### W X D X H - MAIN UNIT

368 x 554 x 585 mm / 14.5 x 21.8 x 23 in

### W X D X H - FRIDGE

240 x 450 x 475 mm / 9.4 x 17.7 x 18.7 in

### WEIGHT

27 kg / 59.52 lb

### COFFEE BOILER

0.6 l

### COFFEE BEAN HOPPER CAPACITY

0.6 kg

### POWDER HOPPERS CAPACITY

small 0.7 l

large 1.5 l

### POWER SUPPLY

100-125 V, 50-60 Hz (1.4 kW)

220-240 V, 50-60 Hz (1.7 kW)

### WATER SUPPLY

Water mains connection and built-in 4-liter water tank (adjustable during installation)

### NOISE LEVEL DURING USE

< 70 dB

## Delivery Capacity

### RECOMMENDED DAILY OUTPUT

cups

120

## Color

● BLACK

The touchscreen frame is available in two colours - black or grey - with no change in price.

## Fridges

● MK4 fridge  
1 type of milk, capacity 4.5 l

€ 1.019,00  
see page 39

## Extra features

● Connect (telemetry system)  
wi-fi version only

on request



## QuBe Pro Milk

- **QuBe Pro Milk 1 grinder (1G)** € 6.978,00  
7" Touchscreen  
27 programmable drinks  
9-16 g brewing chamber, Hot water bypass (1 cup of Americano), Right side hot water outlet, Pro Milk system, Lock package, MDB Protocol
- **QuBe Pro Milk 2 grinders (2G)** € 7.318,00  
7" Touchscreen  
27 programmable drinks  
9-16 g brewing chamber, Hot water bypass (1 cup of Americano), Right side hot water outlet, Pro Milk system, Lock package, MDB Protocol
- **QuBe Pro Milk 2 grinders + 1 powder (2G+1S)** € 7.726,00  
7" Touchscreen  
27 programmable drinks  
9-16 g brewing chamber, Hot water bypass (1 cup of Americano), Right side hot water outlet, Pro Milk system, 1x 1.5 l powder hopper, Lock package, MDB Protocol

The spare parts portal has accessories for installing the limescale protection system, which is recommended for all QuBe units connected to the integrated water tank:

'OR 2043 Viton' seal	ID nr. 6387.00059
'Caripure' water filter	ID nr. 6395.05205
Filter adapter	ID nr. 6337.05324

- Standard
- Optional



## Technical data

### W X D X H - MAIN UNIT

300 x 575 x 770 mm  
11.8 x 22.6 x 30.3 in

### WEIGHT

57 kg / 125.7 lb

### COFFEE BOILER

1 l / 33.8 oz

### COFFEE BEAN HOPPER CAPACITY

4x 1kg / 2.2 lb

### POWER SUPPLY

220 – 240 V~, 50 - 60 Hz (3.1 kW)

### WATER SUPPLY

Water mains connection

### NOISE LEVEL DURING USE

< 70 dB



Touch Coffee

## Delivery Capacity

### RECOMMENDED DAILY OUTPUT

cups

200

## Color

● BLACK

## Basic configuration

- **Touch Coffee** € 14.708,00
  - 10" HD Touchscreen
  - 16 products per page
  - 1 grinder
  - 22 g brewing chamber (BC22)
  - Variable parallel bypass
  - 4 bean hoppers (capacity 4x 1kg / 2.2 lb)

## Coffee

- Left side coffee outlet € 212,00

## Hot Water

- Right side hot water outlet € 307,00

## Extra features

- Automatic Spout € 461,00
- Under counter grounds chute € 408,00
- Lock package € 212,00
- Option Self (lock package, cup stopper pins) € 299,00
- Payment systems see page 51
- Connect (telemetry system) on request

## Add-ons

- GUM External box for waste coffee (under coffee machine) € 363,00 see page 49
- Cup Warmer € 2.146,00 see page 50

● Standard

● Optional

# Touch Coffee

with built-in Coffee Cooler

Fresh Brew Coffee

Touch Coffee with built-in Coffee Cooler



## Technical data

### W X D X H - MAIN UNIT

300 x 575 x 770 mm  
11.8 x 22.6 x 30.3 in

### WEIGHT

57 kg / 125.7 lb

### COFFEE BOILER

1 l / 33.8 oz

### COFFEE BEAN HOPPER CAPACITY

4x 1kg / 2.2 lb

### POWER SUPPLY

220 – 240 V~, 50 - 60 Hz (3.1 kW)

### WATER SUPPLY

Water mains connection

### NOISE LEVEL DURING USE

< 70 dB



**Touch Coffee**  
with built-in Coffee Cooler

## Delivery Capacity

### RECOMMENDED DAILY OUTPUT

cups

200

## Color

● BLACK

## Basic configuration

- **Touch Coffee** with built-in Coffee Cooler € 18.618,00  
10" HD Touchscreen  
16 products per page  
1 grinder  
22 g brewing chamber (BC22)  
Variable parallel bypass  
4 bean hoppers (capacity 4x 1kg / 2.2 lb)  
Built-in Coffee Cooler

## Coffee

- Left side coffee outlet € 212,00

## Hot Water

- Right side hot water outlet € 307,00

## Extra features

- Automatic Spout € 461,00
- Under counter grounds chute € 408,00
- Lock package € 212,00
- Option Self (lock package, cup stopper pins) € 299,00
- Payment systems see page 51
- Connect (telemetry system) on request

## Add-ons

- GUM External box for waste coffee (under coffee machine) € 363,00 see page 49
- Cup Warmer € 2.146,00 see page 50

- Standard
- Optional

# Fridges

	Next Pure Coffee	Next Pure Coffee SV	Next Quick Milk	Next NMS+	Next X2 NMS+	One Pure Coffee	One Quick Milk	One Top Milk	Two Top Milk	MoDe Pure Coffee	MoDe Quick Milk	MoDe Pro Milk	MoDe X2 Pro Milk	QuBe Pure Coffee	QuBe Quick Milk	QuBe Pro Milk	Touch Coffee	Touch Coffee with Coffee Cooler
MK4 fridge 1 type of milk, Venturi system			●				●				●				●			
MK4 fridge 1 type of milk, pump module												●				●		
FUM fridge (under coffee machine) 1 type of milk, Venturi system			●				●				●							
FUM fridge (under coffee machine) 1 type of milk, pump module, milk sensor			●				●				●							
FUM fridge with Lactose-free milk option 1 machine - 2 types of milk			●															
MK6 fridge 1 machine - 1 type of milk			●				●					●	●					
MK6 fridge 1 machine - 2 types of milk			●				●											
MK6 fridge with Cold Milk Foam 1 machine - 1 type of milk			●				●	(1)										
MK6 fridge with Cold Milk Foam 1 machine - 2 types of milk			●															
MK6 fridge with Lactose-free milk option 1 machine - 2 types of milk			●															
MK6 fridge 2 machines - 1 type of milk				●				●										
MK6 fridge 2 machines - 2 types of milk				●				●										

(1) power board required

## MK4 fridge for Quick Milk

W X D X H  
240 x 450 x 475 mm / 9.4 x 17.7 x 18.7 in

WEIGHT  
9 kg / 19.8 lb

POWER SUPPLY  
220-240 V~, 50 Hz, 0.5 A

MILK CONTAINER CAPACITY  
4.5 l / 1.19 gal US

COOLING AGENT  
R600a / 10.5 g

COLOR  
● black



**MK4 fridge - Venturi system, digital thermostat**  
for all Quick Milk configurations

€ 1.019,00

## MK4 fridge for MoDe Pro Milk

W X D X H  
240 x 450 x 475 mm / 9.4 x 17.7 x 18.7 in

WEIGHT  
9 kg / 19.8 lb

POWER SUPPLY  
220-240 V~, 50 Hz, 0.5 A

MILK CONTAINER CAPACITY  
4.5 l / 1.19 gal US

COOLING AGENT  
R600a / 10.5 g

COLOR  
● black



**MK4 fridge - pump module, digital thermostat**  
for MoDe Pro Milk

€ 1.469,00



## FUM fridge for Quick Milk

W X D X H  
315 x 600 x 203 mm / 12.4 x 23.6 x 8.0 in

WEIGHT  
18.5 kg / 40.0 lb

POWER SUPPLY  
220 – 240 V~, 50 Hz, 0.8 A  
220 V~, 60 Hz, 0.9 A  
115 V ~, 60 Hz, 1.3 A

MILK CONTAINER CAPACITY  
4 l / 1.06 gal US

COOLING AGENT  
R600a 16g (220-240 V)  
R134a 40g (115 V)

COLOR  
● black



**FUM fridge - Venturi system**  
for all Quick Milk configurations € 1.595,00

## FUM fridge for Top Milk

W X D X H  
315 x 600 x 203 mm / 12.4x 23.6x 8.0 in

WEIGHT  
18.5 kg / 40 lb

POWER SUPPLY  
220 – 240 V~, 50 Hz, 0.8 A  
220 V~, 60 Hz, 0.9 A  
115 V ~, 60 Hz, 1.3 A

MILK CONTAINER CAPACITY  
4 l / 1.06 gal US

COOLING AGENT  
R600a 16g (220-240 V)  
R134a 40g (115 V)

COLOR  
● black



**FUM fridge - pump module, milk sensor**  
for all Top Milk configurations € 3.318,00

## FUM fridge for NMS+

W X D X H  
315 x 600 x 203 mm / 12.4 x 23.6 x 8.0 in

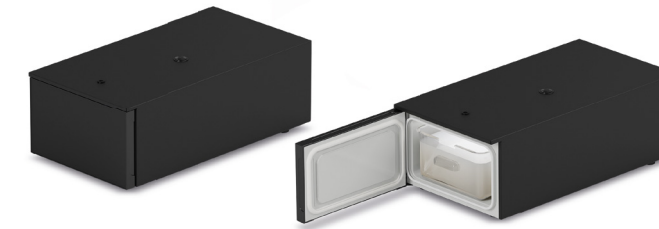
WEIGHT  
18.5 kg / 40.0 lb

POWER SUPPLY  
220 – 240 V~, 50 Hz, 0.8 A  
220 V~, 60 Hz, 0.9 A  
115 V ~, 60 Hz, 1.3 A

MILK CONTAINER CAPACITY  
4 l / 1.06 gal US

COOLING AGENT  
R600a 16g (220-240 V)  
R134a 40g (115 V)

COLOR  
● black



**FUM fridge - pump module, milk sensor**  
for all NMS+ configurations € 3.318,00

## FUM fridge for Next NMS+ with Lactose-free\* milk option

W X D X H  
315 x 600 x 203 mm / 12.4 x 23.6 x 8.0 in

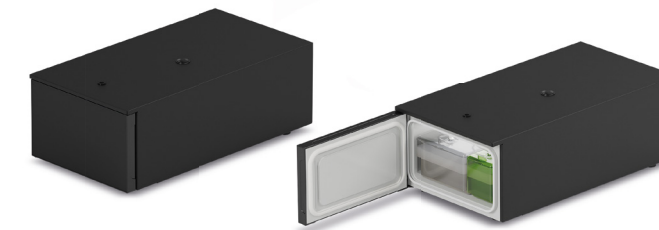
WEIGHT  
18.5 kg / 40.0 lb

POWER SUPPLY  
220 – 240 V~, 50 Hz, 0.8 A  
220 V~, 60 Hz, 0.9 A  
115 V ~, 60 Hz, 1.3 A

MILK CONTAINERS CAPACITY  
2 TYPES OF MILK (LACTOSE-FREE MILK)  
Milk 2.5 l / 0.66 gal US / 0.55 gal UK  
Lactose-free milk 1.25 l / 0.36 gal US / 0.27 gal UK

COOLING AGENT  
R600a 16g (220-240 V)  
R134a 40g (115 V)

COLOR  
● black



**FUM fridge with Lactose-free milk option -  
pump module, milk sensor, milk containers**  
for Next NMS+ € 3.801,00

\* Lactose-free milk system: < 1g of lactose per 1000 g of ready-to-drink product

## FUM fridge for MoDe Pro Milk

W X D X H  
315 x 600 x 203 mm / 12.4 x 23.6 x 8.0 in

WEIGHT  
18.5 kg / 40.0 lb

POWER SUPPLY  
220 – 240 V~, 50 Hz, 0.8 A  
220 V~, 60 Hz, 0.9 A  
115 V ~, 60 Hz, 1.3 A

MILK CONTAINER CAPACITY  
4 l / 1.06 gal US

COOLING AGENT  
R600a 16g (220-240 V)  
R134a 40g (115 V)

COLOR  
● black



**FUM fridge - pump module, milk sensor** € 3.318,00  
for MoDe Pro Milk

## MK6 fridges for One Top Milk

W X D X H  
300 x 365 x 580 mm  
11.8 x 14.4 x 22.8 in

WEIGHT  
29 kg / 63.9 lb

POWER SUPPLY  
220–240 V, 50-60 Hz, 0.25 A  
110-120 V, 60 Hz, 0.77 A  
Japan: 100 V, 50-60 Hz, 0.7 A

MILK CONTAINER CAPACITY  
1 TYPE OF MILK  
6 l / 1.58 gal US / 1.32 gal UK

MILK CONTAINERS CAPACITY  
2 TYPES OF MILK  
2x 3 l / 0.79 gal US / 0.66 gal UK

MILK LEVEL SENSOR  
included

COOLING AGENT  
R600a 14g

COLOR  
● black



### MK6 fridges

1 machine - 1 type of milk € 3.684,00

1 machine - 2 types of milk € 4.263,00

### MK6 fridges with Cold Milk Foam

1 machine - 1 type of milk  
with Cold Milk Foam (CMF) \* € 4.622,00

### Optionals

Extension pipe for under counter installation  
150 cm / 59 in max lenght € 336,00

Milk level sensor (pressure sensor)  
for 1 type of milk \*\* € 377,00

Milk level sensor (pressure sensor)  
for 2 types of milk \*\* € 595,00

\* for One Top Milk power board required

\*\* not necessary with MK6 fridge milk containers

## MK6 fridges for Two Top Milk

### W X D X H

300 x 365 x 580 mm  
11.8 x 14.4 x 22.8 in

### WEIGHT

29 kg / 63.9 lb

### POWER SUPPLY

220-240 V, 50-60 Hz, 0.25 A  
110-120 V, 60 Hz, 0.77 A  
Japan: 100 V, 50-60 Hz, 0.7 A

### MILK CONTAINER CAPACITY

1 TYPE OF MILK  
6 l / 1.58 gal US / 1.32 gal UK

### MILKS CONTAINERS CAPACITY

2 TYPES OF MILK  
2x 3 l / 0.79 gal US / 0.66 gal UK

### MILK LEVEL SENSOR

included

### COOLING AGENT

R600a 14g

### COLOR

● black



### MK6 fridges

2 machines - 1 type of milk € 4.263,00

2 machines - 2 types of milk \* € 4.601,00

### Optionals

2x Extension pipe for under counter installation  
150 cm / 59 in max length € 672,00

2x Milk level sensor (pressure sensor)  
for 1 type of milk \*\* € 754,00

2x Milk level sensor (pressure sensor)  
for 2 types of milk \*\* € 1.190,00

\* In this configuration, each machine is connected to only one of the two containers

\*\* not necessary with MK6 fridge milk containers

## MK6 fridge for MoDe Pro Milk

### W X D X H

300 x 365 x 580 mm  
11.8 x 14.4 x 22.8 in

### WEIGHT

29 kg / 63.9 lb

### POWER SUPPLY

220-240 V, 50-60 Hz, 0.25 A  
110-120 V, 60 Hz, 0.77 A  
Japan: 100 V, 50 - 60 Hz, 0.7 A

### MILK CONTAINER CAPACITY

1 TYPE OF MILK  
6 l / 1.58 gal US / 1.32 gal UK

### MILK LEVEL SENSOR

included

### COOLING AGENT

R600a 14g

### COLOR

● black



### MK6 fridge

1 machine - 1 type of milk € 3.684,00

## MK6 fridges for MoDe X2 Pro Milk

### W X D X H

300 x 365 x 580 mm  
11.8 x 14.4 x 22.8 in

### WEIGHT

29 kg / 63.9 lb

### POWER SUPPLY

220-240 V, 50-60 Hz, 0.25 A  
110-120 V, 60 Hz, 0.77 A  
Japan: 100 V, 50 - 60 Hz, 0.7 A

### MILK CONTAINER CAPACITY

1 TYPE OF MILK  
6 l / 1.58 gal US / 1.32 gal UK

### MILK CONTAINER CAPACITY

2 TYPES OF MILK  
2x 3 l / 0.79 gal US / 0.66 gal UK

### MILK LEVEL SENSOR

included

### COOLING AGENT

R600a 14g

### COLOR

● black



### MK6 fridges

2 machines - 1 type of milk € 4.263,00

2 machines - 2 types of milk \* € 4.601,00

\* In this configuration, each machine is connected to only one of the two containers

## MK6 fridges for Next NMS+

### W X D X H

300 x 365 x 580 mm  
11.8 x 14.4 x 22.8 in

### WEIGHT

29 kg / 63.9 lb

### POWER SUPPLY

220-240 V, 50-60 Hz, 0.25 A  
110-120 V, 60 Hz, 0.77 A  
Japan: 100 V, 50-60 Hz, 0.7 A

### MILK CONTAINER CAPACITY

1 TYPE OF MILK  
6 l / 1.58 gal US / 1.32 gal UK

### MILK CONTAINERS CAPACITY

2 TYPES OF MILK  
2x 3 l / 0.79 gal US / 0.66 gal UK

### MILK CONTAINERS CAPACITY

2 TYPES OF MILK (LACTOSE-FREE MILK)  
Milk 3.5 l / 0.92 gal US / 0.77 gal UK  
Lactose-free milk 1.75 l / 0.46 gal US / 0.38 gal UK

### MILK LEVEL SENSOR

included

### COOLING AGENT

R600a 14g

### COLOR

● black



### MK6 fridges

1 machine - 1 type of milk € 3.684,00

1 machine - 2 types of milk € 4.263,00

### MK6 fridges with Cold Milk Foam

1 machine - 1 type of milk with Cold Milk Foam (CMF) € 4.622,00

1 machine - 2 types of milk with Cold Milk Foam (CMF) € 5.202,00



### MK6 fridge with Lactose-free\* milk option

1 machine - 2 types of milk with milk level sensor (pressure sensor) and milk containers € 5.090,00

### Optionals

Extension pipe for under counter installation 150 cm / 59 in max lenght € 336,00

Milk level sensor (pressure sensor) for 1 type of milk \*\* € 377,00

Milk level sensor (pressure sensor) for 2 types of milk \*\* € 595,00

\* Lactose-free milk system: < 1g of lactose per 1000 g of ready-to-drink product

\*\* not necessary with MK6 fridge milk containers

## MK6 fridges for Next X2 NMS+

### W X D X H

300 x 365 x 580 mm  
11.8 x 14.4 x 22.8 in

### WEIGHT

29 kg / 63.9 lb

### POWER SUPPLY

220-240 V, 50-60 Hz, 0.25 A  
110-120 V, 60 Hz, 0.77 A  
Japan: 100 V, 50-60 Hz, 0.7 A

### MILK CONTAINER CAPACITY

1 TYPE OF MILK  
6 l / 1.58 gal US / 1.32 gal UK

### MILK CONTAINERS CAPACITY

2 TYPES OF MILK  
2x 3 l / 0.79 gal US / 0.66 gal UK

### MILK LEVEL SENSOR

included

### COOLING AGENT

R600a 14g

### COLOR

● black



### MK6 fridges

2 machines - 1 type of milk € 4.263,00

2 machines - 2 types of milk \* € 4.601,00

### Optionals

2x Extension pipe for under counter installation 150 cm / 59 in max lenght € 672,00

2x Milk level sensor (pressure sensor) for 1 type of milk \*\* € 754,00

2x Milk level sensor (pressure sensor) for 2 types of milk \*\* € 1.190,00

\* In this configuration, each machine is connected to only one of the two containers

\*\* not necessary with MK6 fridge milk containers



# Pump modules (SMPU)

For the installation of general fridges next to the machine or under the counter

## SMPU

W X D X H  
FOR ONE TOP MILK AND TWO TOP MILK  
193 x 193 x 80 mm  
7.6 x 7.6 x 3.1 in

W X D X H  
FOR NEXT NMS+, NEXT X2 NMS+  
223 x 214 x 118 mm  
8.8 x 8.4 x 3.1 in

EXTENSION PIPE FOR UNDER COUNTER  
INSTALLATION  
150 cm / 59in max length

POWER SUPPLY  
24 V from coffee machine

MILK LEVEL SENSOR  
included

COLOR  
● grey

## SMPU (One Top Milk, Two Top Milk)

1 machine - 1 type of milk	€ 1.370,00
1 machine - 2 types of milk	€ 1.987,00
2 machines - 1 type of milk	€ 2.353,00
2 machines - 2 types of milk	€ 3.262,00

## SMPU (Next NMS+, Next X2 NMS+)

1 machine - 1 type of milk	€ 1.370,00
1 machine - 2 types of milk	€ 1.987,00
2 machines - 1 type of milk	€ 2.353,00
2 machines - 2 types of milk	€ 3.262,00
1 machine - 1 type of milk with Cold Milk Foam (CMF)	€ 2.136,00
1 machine - 2 types of milk with Cold Milk Foam (CMF)	€ 2.611,00



# Add-ons



	Next Pure Coffee	Next Pure Coffee SV	Next Quick Milk	Next NMS+	Next X2 NMS+	One Pure Coffee	One Quick Milk	One Top Milk	Two Top Milk	MoDe Pure Coffee	MoDe Quick Milk	MoDe Pro Milk	MoDe X2 Pro Milk	QuBe Pure Coffee	QuBe Quick Milk	QuBe Pro Milk	Touch Coffee	Touch Coffee with Coffee Cooler
GUM External box for waste coffee (under coffee machine)	●	●	●	●	●	●	●	●	●								●	●
Powder Module	●	●	●	●	●	●	●	●	●									
Cup Warmer	●	●	●	●	●	●	●	●	●	●	●	●	●				●	●

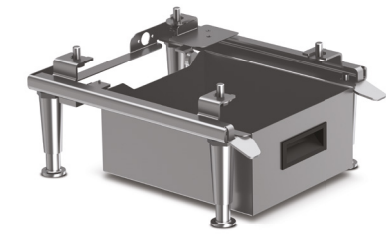
## GUM

W X D X H  
300 x 365 x 136 mm  
11.8 x 14.4 x 5.5 in

COFFEE GROUNDS CONTAINER  
CAPACITY  
750 g / 1.6 lb

POWER SUPPLY  
24 V from coffee machine

COLOR  
● grey



GUM Coffee grounds container € 363,00

Levelling feet for add-ons Spare parts catalogue  
ID nr. 69000174 (x1)

## Powder Module

W X D X H  
160 x 378 x 770 mm  
6.3 x 14.9 x 30.3 in

WEIGHT  
13 kg / 28.7 lb

POWER SUPPLY  
220-240 V~, 50-60 Hz  
120 V~, 60 Hz

POWER RATING  
0.1 kW

POWDER HOPPER CAPACITY  
2x 1.8 l

NOISE LEVEL DURING USE  
< 70 dB

COLOR  
● black



Powder Module € 1.798,00



## Cup Warmer

W X D X H  
300 x 365 x 580 mm  
11.8 x 14.4 x 22.8 in

WEIGHT  
14 kg / 30.1 lb

POWER SUPPLY  
220-240 V~, 50 Hz

POWER RATING  
420 W

COLOR  
● black



Cup Warmer

€ 2.146,00

## Payment Module

W X D X H  
150 x 365 x 580 mm  
5.9 x 14.4 x 22.8 in

POWER SUPPLY  
24 V from coffee machine

COLOR  
● black



## Coin acceptor

Coin acceptor with case € 1.595,00

Case for coin acceptor € 1.127,00

Case for coin acceptor with Diva2 Base CCI parallel coin checker € 3.380,00

Token 22 mm x 1.5 mm (x100) € 69,00

Token 24 mm x 1.25 mm (x100) € 69,00

## Change giver

Change giver with case, Diva2 Base CCI, CCI cable € 5.646,00

Case for change giver with Diva2 Base CCI parallel coin checker € 3.064,00

## Customized solutions

Customizable case with Diva2 Base Max CCI, CCI cable € 2.317,00

## Interfaces

CSI-interface Set with cable Spare parts catalogue ID nr. 00033373

Diva2 Base CCI Spare parts catalogue ID nr. 34070094

Diva2 Base CCI parallel coin checker Spare parts catalogue ID nr. 34070095

Diva2 Base Max CCI Spare parts catalogue ID nr. 34070096



Technical Specification

Filter cartridges

**DP 2 MANUAL**  
Manual water softener

W X D X H  
185 x 185 x 450 mm  
7.3 x 7.3 x 17.7 in

RESIN QUANTITY  
8 l / 1.76 gal UK

GAS CONNECTION  
3/38"

VERSION  
manual for 1-2 GR

**DP 4 MANUAL**  
Manual water softener

W X D X H  
185 x 185 x 620 mm  
7.3 x 7.3 x 24.4 in

RESIN QUANTITY  
11 l / 2.42 gal UK

GAS CONNECTION  
3/38"

VERSION  
manual for 3-4 GR

**BESTMAX SMART 35**  
Limescale protection  
all-rounders

CAPACITY  
7800 l - 10 °dKH

INLET PRESSURE  
2-8 bar (min-max)

WATER TEMPERATURE  
4-30 °C (min-max)

TOTAL HEIGHT WITH  
BRACKET  
527 mm

INSTALLATION LENGTH  
125 mm

Ø FILTER CARTRIDGE  
147 mm

**BESTMAX PREMIUM XL**  
Protection against limescale  
and gypsum with BWT Magne-  
sium Technology

CAPACITY  
4300 l - 10 °TH

INLET PRESSURE  
2-8 bar (min-max)

WATER TEMPERATURE  
4-30 °C (min-max)

TOTAL HEIGHT WITH  
BRACKET  
527 mm

INSTALLATION LENGTH  
125 mm

Ø FILTER CARTRIDGE  
147 mm

**BESTPROTECT XL**  
Limescale and gypsum  
protection

CAPACITY  
3950 l - 10 °TH

CONNECTION THREAD  
3/8" (in/out)

INLET PRESSURE  
2-8 bar (min-max)

WATER TEMPERATURE  
4-30 °C (min-max)

TOTAL HEIGHT WITH  
BRACKET  
527 mm

INSTALLATION LENGTH  
125 mm

Ø FILTER CARTRIDGE  
147 mm

Filter heads

**BESTHEAD FLEX**  
with 2 connection pieces, 90°  
elbow, FLEX insert, 3/8" AG

INLET PRESSURE  
2-8 bar (min-max)

WATER TEMPERATURE  
4-30 °C (min-max)



DP 2 MANUAL / DP 4 MANUAL

DP 2 MANUAL € 183,00

DP 4 MANUAL € 199,00



BESTPROTECT XL



BESTHEAD FLEX

DP BESTPROTECT XL € 287,00

Kit includes: BESTPROTECT XL filter cartridge + BESTHEAD FLEX filter head



BESTMAX SMART 35



BESTHEAD FLEX

DP SMART 35 € 311,00

Kit includes: BESTMAX SMART 35 filter cartridge + BESTHEAD FLEX filter head



BESTMAX PREMIUM XL



BESTHEAD FLEX

DP PREMIUM XL € 349,00

Kit includes: BESTMAX PREMIUM XL filter cartridge + BESTHEAD FLEX filter head



COFFEE CLEANING TABLETS (100 TAB)	spare parts catalogue ID nr. 69000408
CLEANER FOR COFFEE GRINDER (430 G)	spare parts catalogue ID nr. 69000385
CLEANER ACID FORMULA SYSTEM MILK (1 L)	spare parts catalogue ID nr. 69000400



**Entry in effect.** This price list will take effect as of 01/01/2025. It does not represent a tender and all products and prices are subject to change at any time without notice.

**Prices.** The prices are expressed in Euros; prices to the public are quoted net of VAT for goods packaged ex-works, installation excluded.

**Terms of delivery.** The delivery is to be considered in Rancilio factory. The buyer bears all transport risks, however the goods are shipped, and thus the manufacturer will not be liable for damage or losses occurring during transport.

**Warranty.** The manufacturer provides a warranty for manufacturing faults for the merchandise for 12 months from the date of installation. The warranty does not cover damages caused by incorrect installation or maintenance. Rancilio Group spa con socio unico shall not be held liable for any damages caused by improper, erroneous or unreasonable use of its products. The warranty shall only be valid for the original purchaser and it shall only cover parts; it does not cover the labor. Any return of the equipment must be authorized in writing by Rancilio Group spa con socio unico. The validity of the warranty is subordinated to the full respect of the purchase price payment deadlines; in absence of such respect the warranty will be granted at the sole discretion of the company.

**Disputes.** Any disputes shall be settled by the Court of Milan, Italy.

## Certifications

The numerous quality and conformity certifications obtained by Rancilio Group products are a guarantee of quality and offer our customers all over the world the security of having chosen a partner of excellence.

For info on available Products' Certifications please visit:  
[www.ranciliogroup.com/certifications/](http://www.ranciliogroup.com/certifications/)

For more information about the delivery capacity and energy consumption of Egro coffee machines, please visit:  
<https://www.grosskuechen.cert.hki-online.de/en>





[egrocoffee.com](http://egrocoffee.com)



an Ali Group company



The Spirit of Excellence